

# UNDERWATER LIGHTS



# "UL-S100 / UL-S300" Stainless Steel Underwater Light

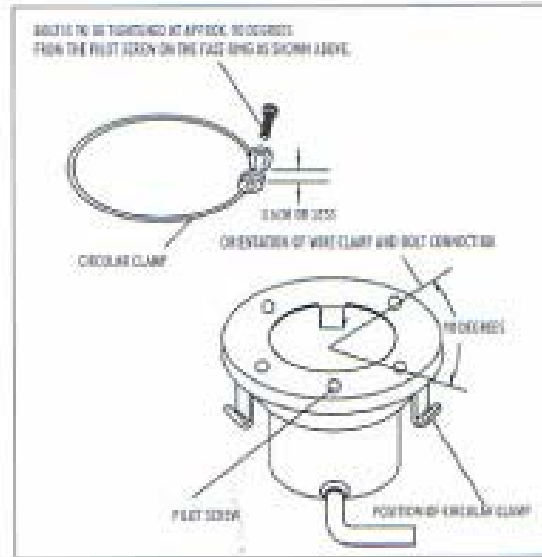
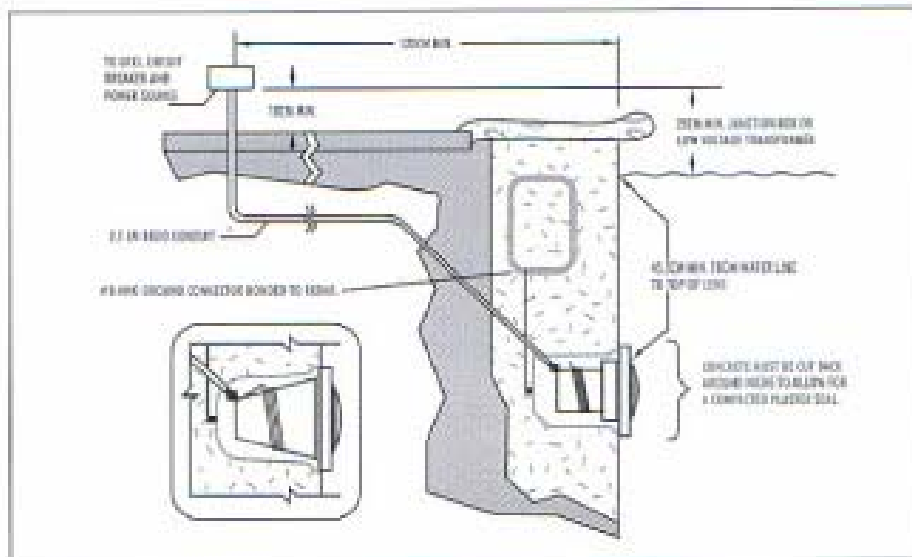
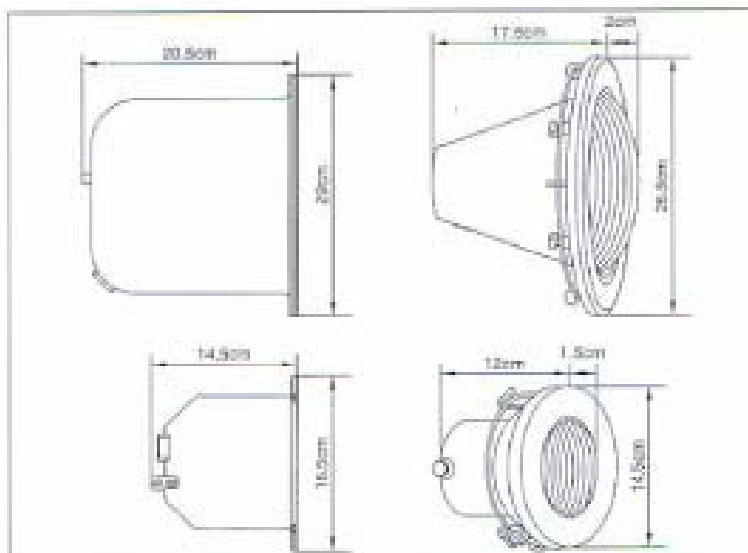
There is nothing better than an attractive underwater lighting for enhancing a pool's appearance. And for giving your pool that special nighttime beauty, there is no better lighting than EMAUX pool lights. These underwater lights are expertly engineered to provide optimum performance and in fact tonight they will light more than 1 million pools worldwide.

UL-S100 / UL-S300 Stainless Steel Underwater Light uses reflector lamp and is designed for installation EMAUX products. The light shell is made of high quality 304 stainless steel and lens is tempered glass. Light can be used in low-voltage equipment and is world wide used.



### Standard features include:

- \* Stainless steel shell & face ring are durable and corrosion resistant.
- \* Optimum light diffusion.
- \* Easy to service. All EMAUX lights allow you to change the bulb without lowering your water level.
- \* Low voltage for safety, include earth joint.
- \* Available in 100W and 300W / 12V models.
- \* Include Cable 2.5m.
- \* IP68 Waterproof Standard.
- \* Three-Year Limited Warranty (Bulb Not Included)



# "UL-S150" Stainless Steel Underwater Light

There latest state of the art in materials, electrical connectors, safety and design have gone into developing this full sized light for underwater applications in concrete and vinyl liner pools and spas. Only the finest materials are used to manufacture the UL-S150 light. The face ring is high polished stainless steel. The lens is prismatic design for clear tempered glass and the other materials are high temperature, corrosion resistant components.

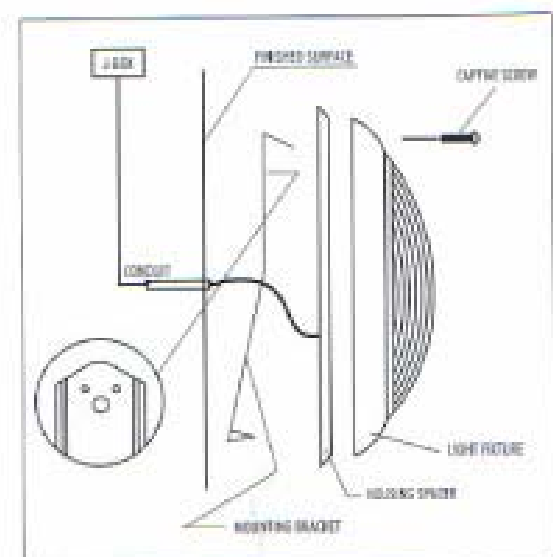
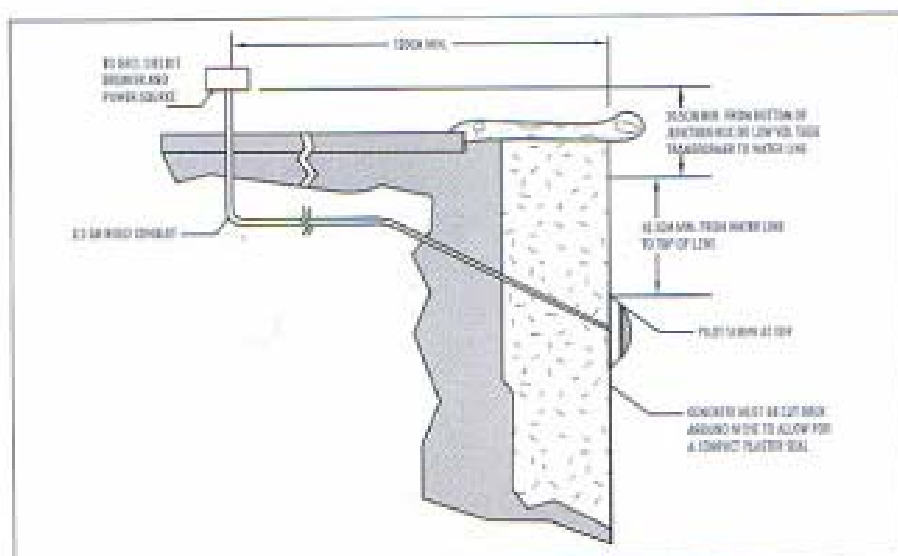
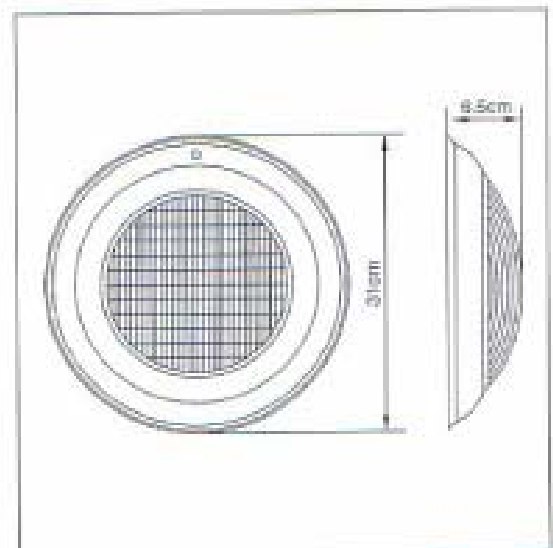
UL-S150 Stainless Steel Underwater Lights provide brilliant, double contact quartz-halogen lighting for all vinyl liner, concrete pools and massage pools. This revolutionary, patented design uses a mounting hub and bracket instead of a niche. This light eliminates the need for pre-punched light panels, costly makeup panels and extra plates. It reduces installation costs and leak potential for concrete and vinyl pools.



"UL-S150" Stainless Steel Underwater Light

### Standard features include:

- \* Stainless steel shell and face ring are durable and corrosion resistant.
- \* Only a 2.5cm. hole in wall panel.
- \* No costly make-up panels.
- \* No niche is needed.
- \* Wall hugging fit.
- \* Easy to maintain & installation
- \* Including earth joint.
- \* Using 2 bulks of 12V / 75W.
- \* Include Cable 2.5m.
- \* IP68 Waterproof Standard.
- \* Three-Year Limited Warranty (Bulb Not Included)



## "UL-P100" Plastic Underwater Light

UL-P100 Plastic Underwater Lights provide brilliant, double contact quartz-halogen lighting for all vinyl liner, concrete pools and massage pools.

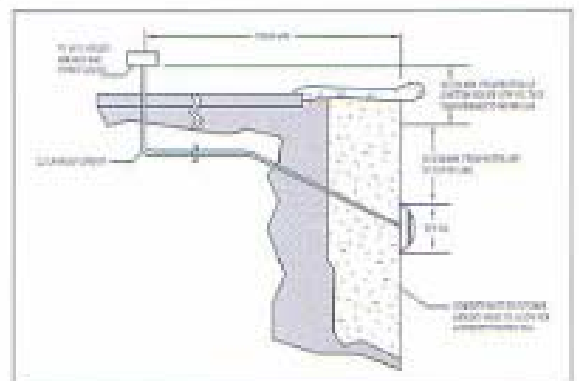
This revolutionary, patented design uses a mounting hub and bracket instead of a niche. This light eliminates the need for pre-punched light panels, costly makeup panels and extra plates. It reduces installation costs and leak potential for concrete and vinyl pools.

### Standard features include:

- \* Only a 2.5cm. hole in wall panel.
- \* Only the finest materials used.
- \* No costly make-up panels.
- \* No extra braces.
- \* Wall hugging fit.
- \* Easy to maintain & installation
- \* Available in 12V / 100W.
- \* Including earth joint.
- \* Economic, 100% tested for safety.
- \* Include Cable 4m.
- \* IP58 Waterproof Standard.
- \* Three-Year Limited Warranty (Bulb Not Included)



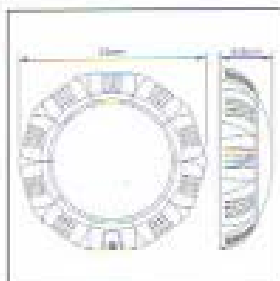
"UL-P100" Plastic Underwater Light



## "UL-TP100" Plastic Underwater Light



"UL-TP100" Plastic Underwater Light



The UL-TP100 Plastic Underwater Light represents a significant advancement in pool and spa light technology. The shallow placement of these innovative lights of opposite pool ends will illuminate the entire swimming area, hiding plaster imperfections and eliminating hot spots in the pool.

### Standard features include:

- \* All plastic housing and lens are impact resistant.
- \* Fits on any vertical wall.
- \* Easy replacement.
- \* Easy maintenance & installation.
- \* Only a 2.5cm. hole in wall panel
- \* Perfect for lights on opposite pool ends.
- \* High intensity halogen quartz bulb is energy efficient.
- \* Soft, even light distribution.
- \* Available in 12V / 100W.
- \* Include Cable 4m.
- \* IP58 Waterproof Standard.
- \* Three-Year Limited Warranty (Bulb Not Included)



**Showroom** : 937-0 Corner Sukhumvit 51, Bangkok 10110 Thailand.  
Tel : 0 2259 6248-9 Fax : 0 2338 4773

**Head office** : 910 Srinakarin Rd., Suanlung, Bangkok 10250 Thailand.  
Tel : 0 2362 5142-58 (17 lines auto) Fax : 0 2362 5159

**www.poolspa.co.th**                      **email : sales@poolspa.co.th**

Your Dealer: